

Container and Pallet Pooling Solutions

Go Green

FLEXOL Solutions

Save Trees



FLEXOL
ENGINEERING YOUR PACKAGING

FLEXOL owned packing assets that are Foldable, Re-Usable & Returnable in nature and available on pay per use method to contribute to greener supply chain

FOLDABLE METAL CONTAINER



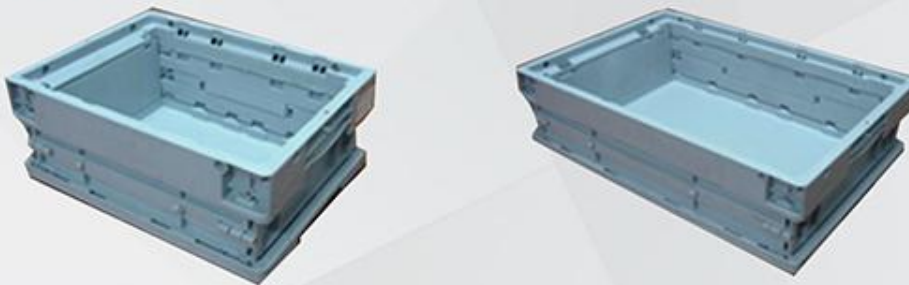
Model	Dimension (mm)	Dynamic Load (Kg)	Static Load (T)	Stacking on Truck
FMC1010	1000 X 1000 X 850	1500	4	1+1
FMC1012	1200 X 1000 X 890	1500	4	1+1

FOLDABLE LARGE CONTAINER



Part Number	OD (mm)	ID (mm)	Self Weight (kg)	Dynamic Load (T)	Static Load (T)	Frame Load (T)
FLC1012-9	1200*1000*975	1110*910*790	65	1	4	0.8
FLC1012-8	1200*1000*863	1110*919*700	46	0.8	4	0.8
FLC1012-1	1200*1000*1000	1110*919*838	51	1	4	0.8

FOLDABLE PLASTIC CONTAINER



PARTNO	FPC6040330	FPC6040325	FPC6040320	FPC6040243	FPC6040165	FPC4030243	FPC4030165
OD (mm)	600x400x330	600x400x325	600x400x320	600x400x243	600x400x165	400x300x243	400x300x165
ID (mm)	570x370x300	540x365x300	555x360x300	555x360x225	555x360x145	355x260x225	355x260x145
Height in Folded Condition (mm)	95	95	90	90	90	95	95
Self Weight (kg)	3.8	3	2.9	2.6	2.2	1.6	1.4
Dynamic Load (kg)	20	25	25	20	18	20k	18k
Static Load (kg)	125	125	125	100	90	100	90
Internal Volume (L)	60	60	59.9	45	28.9	27	13.4

Reach us @

FLEXOL Packaging (India) Limited (A Subsidiary of TVS Logistics Services Limited)
 183/1A 3rd Floor, Mount Poonamallee Road, Chennai - 600 056, Tamil Nadu, INDIA
 Dir - +91 44 2679 0932 / +91 44 2679 0933, Web : www.flexol.in
 For Southern Region Sales Enquiries E-Mail : salestn@flexol.in
 For Northern & Western Region Sales Enquiries E-Mail : salesmh@flexol.in